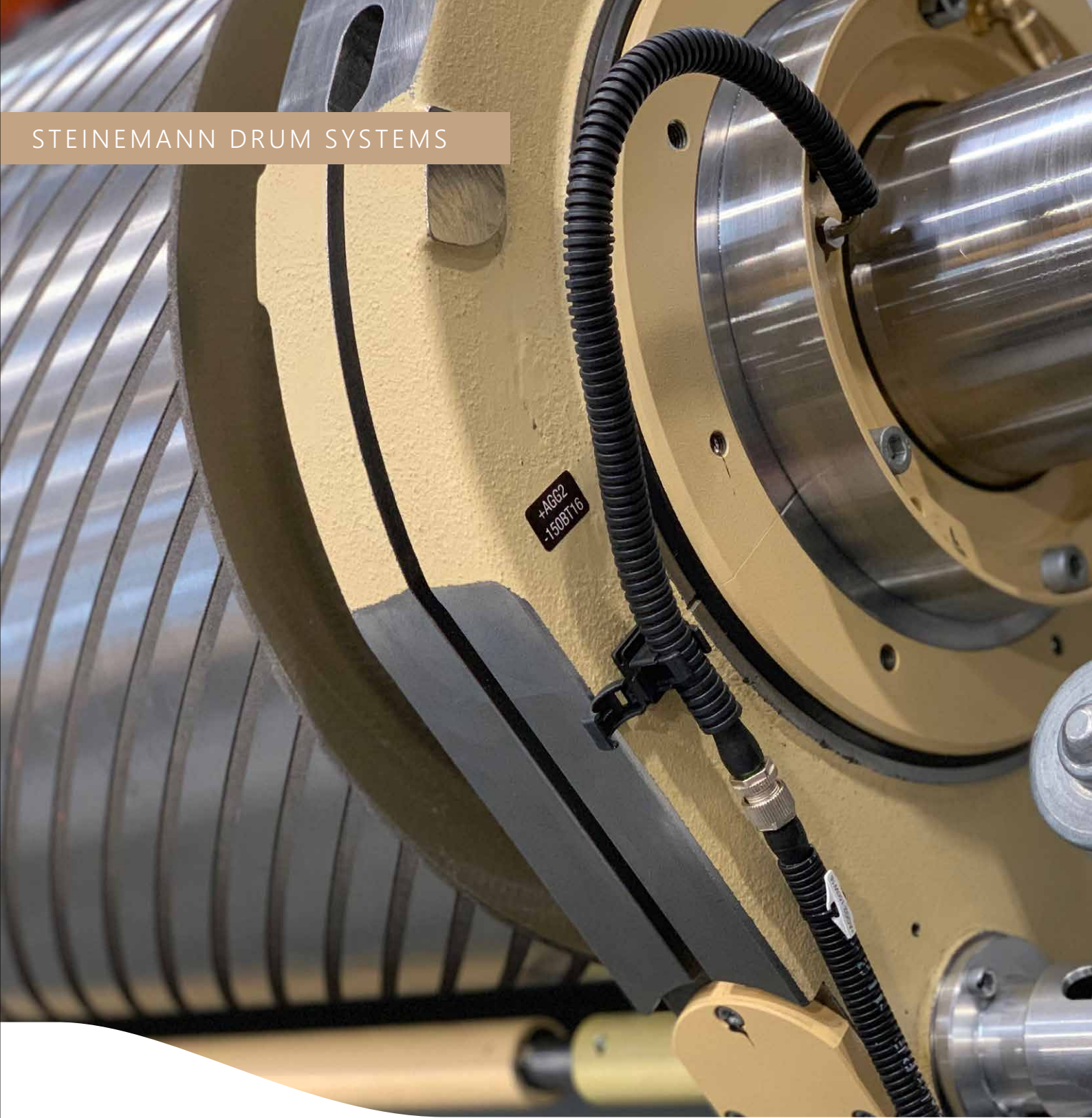
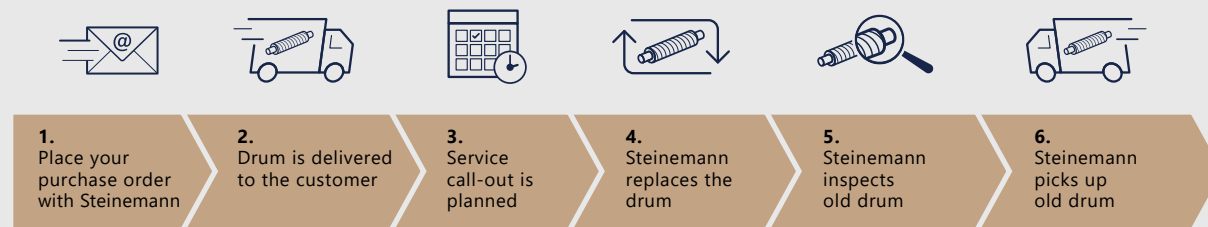


STEINEMANN DRUM SYSTEMS



*steinemann*

## Europe contact drum exchange program.



## Your benefits:

### Product

- No spare drums need to be held in stock
- Guarantee automatically extended by 24 months
- No capital spending on new drums needed
- High process reliability
- Constant, trusted Steinemann quality

### Service and cost savings

- On-site installation included
- Transport included
- No transport costs
- No customs formalities
- All-inclusive Steinemann service
- Plannable costs
- Reduction to TCO

## Your savings:

Save up to 37% versus a new drum purchase with our Exchange Program! Want to know how? Call us and we'll be happy to go through the figures with you.



### Conditions

- Only for 365/455 mm diameter contact drums
- Contact drum must be in repairable condition
- Program only offered for Steinemann drums
- We can offer to buy back your spare drums (price depends on drum condition)
- Replaced drums must be ready for pick-up within 4 months for return to Steinemann

## We know how to produce best-in-class surface results.

**The drum system is the most important machine part for ensuring constant, optimum panel quality. Even the smallest oscillations or deviations in radial runout accuracy, cylindricity or balance can worsen surface quality.**

As well as ensuring drums are manufactured to tight tolerances, uniform quality is only assured by the interplay of the entire drum system to virtually exclude all vibration while minimizing wear. We've mastered this critical system of interlocking parts and know how the sanding result can be positively affected by our drum systems.

## What makes our drum systems unique:



### Advanced drive decoupling

- Reduces vibrations due to absence of direct contact zone between the motor and contact drum systems
- Relief of bending stress on end
- Quick, simple replacement



### Forged drum ends

- Outstanding resilience to alternating bending stress at very high loads

### Grooving and Arctech® coating

- High wear resistance for outstanding performance data and longevity
- Optimum grip with minimal belt wear



### Bearing design

- Zero-backlash eccentric locking collars
- Fixed/movable bearing design for optimum running characteristics under all operating conditions

### Lubrication design

- Lubrication channels run into roller bearings to ensure high reliability and availability

## Process reliability guaranteed for 24 months.

From blank to preinstalled drum, our drums are produced on the world's most modern machines to 'Made in Switzerland' quality.

Our calibration drum figures speak for themselves:

- Radial runout accuracy of 0.02 mm
- Balanced to exactly 5 grams at 2,000 rpm
- Drum cylindricity of 0.015 mm and bearing seats cylindricity of 0.005 mm.

With the installation of our pre-assembled, precision-manufactured drum systems for calibration and fine sanding, we not only guarantee **superior surface quality** but also **24 months process reliability** in terms of:

- Panel dimensional tolerances
- Target surface finish
- Machine availability

## Pre-assembled drum systems as all-in-one set.

### CALIBRATION DRUM SYSTEM

**Guarantees required dimensional tolerance**  
Geometry (thickness and parallelism)

### FINE SANDING DRUM SYSTEM

**Guarantees the final surface finish**  
Reduces chatter marks and delivers roughness needed

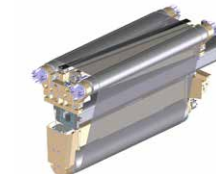
## Components as a factor for process reliability.

### CALIBRATION DRUM SYSTEM



		Panel		Machine
		Dimensional tolerance (+/- 0.05 mm)	Surface finish	Wear
Calibration drum set	Contact drum	●	●	●
	Housing		●	●
	Eccentric		●	●
	Roller bearing		●	●
	Clutch		●	●
Tension drum set	Tension drums		●	●
	Housing			●
	Roller bearing		●	●

### FINE SANDING DRUM SYSTEM



		Panel		Machine
		Dimensional tolerance (+/- 0.05 mm)	Surface finish	Wear
Guide roller set	Guide rollers		●	●
	Housing			●
	Roller bearing		●	●
Tension drum set	Tension drums		●	●
	Housing			●
	Roller bearing		●	●

## Servicing and repair offer:

- Reconstruction of the drum body
- Bearing seat repair
- New Arctech® coating
- Regrinding of roller body
- Grinding of concave drum surfaces possible for special applications
- Drum rebalancing for low-vibration operation
- Bearing overhaul, including fitting to drums to ensure trouble-free machine installation



Interested?

[spareparts@steinemann.com](mailto:spareparts@steinemann.com)

## HEADQUARTERS

Steinemann Technology AG  
Schoretshuebstrasse 24  
POB 461  
9015 St. Gallen  
Switzerland

## SUBSIDIARIES

Steinemann Technology ASIA SDN BHD  
Steinemann (Shanghai) Machinery Co. Ltd.  
Steinemann Technology USA Inc.  
ООО Штайнеманн Технолджи АГ

## CONTACT

Tel. +41 71 313 51 51  
[www.steinemann.com](http://www.steinemann.com)

***steinemann***