

STEINEMANN UPGRADES



steinemann

Modifications to wide belt sanding machines

Has your sanding machine seen better days? Bring it up to date with the latest sanding technology! Original Steinemann Retrofits can significantly boost the productivity of your existing sanding machine.

Our in-house experts will be happy to advise you about the available modernization options for your sanding machine pool.

Contents:

CONTROL UPGRADE (SIEMENS)

Page 3

V-BELT

Page 4

GUIDE ROLLERS

Page 5

CONVEYOR ROLLER DRIVE

Page 6



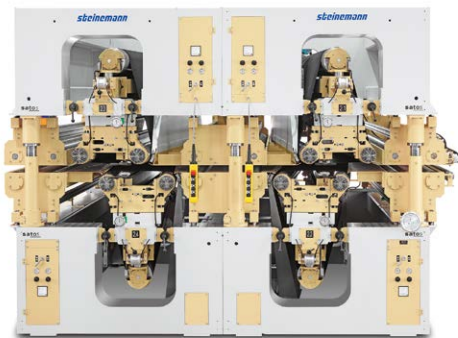
Control Upgrade (CUS)

CUS control upgrade to modernize the installed base. The result: Guaranteed service availability and 'up-to-date' for automation.

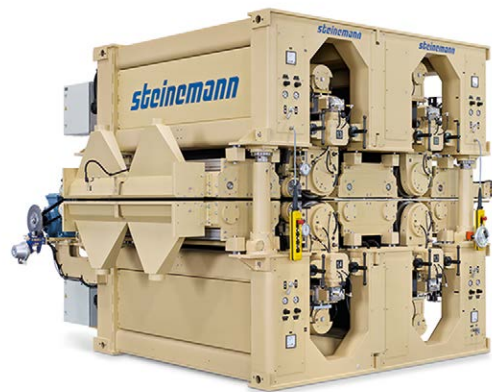
Benefits

- Higher machine availability
- Latest Siemens control generation
- Increased productivity with sequential auto-start for all machine heads
- User-friendly machine operation with comfort functions

Machine type compatibility



Satos with Siemens control



NOVA-H with Siemens control

Scope of supply

- Control software, based on TSQ model
- Siemens CPU S7-1517F
- 22" Siemens Touch Panel

In just 48 hours,
we give your machine
the ultimate refresh
in terms of operation
and functionality!

V-belt upgrade

This retrofit replaces the flat drive belt on the sanding belt drive with a V-belt.

Benefits

Higher availability, since the drive belts no longer slip off even in the presence of sudden excess loads. Replacing the flat drive belt also simplifies resetting work after repairs and maintenance.

Suitable for

- Nova
- Nova-S
- Nova-RS
- Nova-RSA

Package contents

- V-belt pulleys/V-belt
- Taper lock
- New motor attachment
- Layshaft is partially assembled and supplied as follows: shaft, spacers, inner bearing cover, self-aligning roller bearing, V-belt pulley

Please note: Bearing housing, outer bearing cover, brake disc and clutch half are reused from the existing layshaft



Guide roller upgrade

The existing guide rollers with a diameter of 125 mm are replaced by guide rollers with a diameter of 145 mm.

Benefits

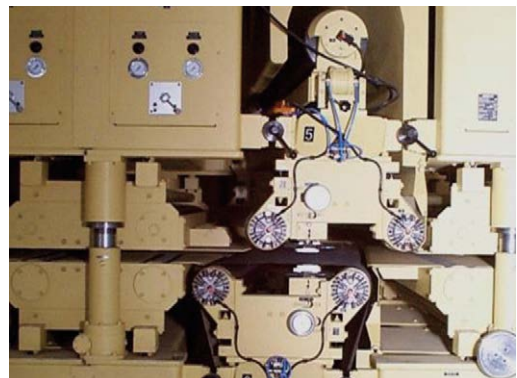
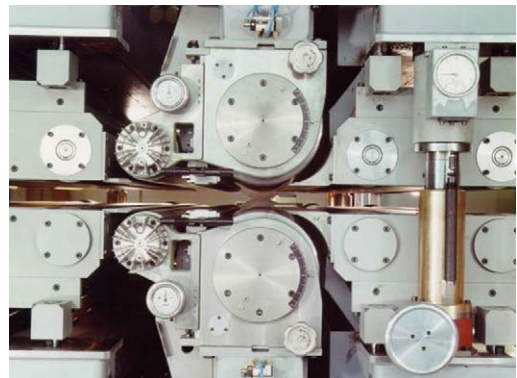
With the new bearing arrangement and the larger roller diameter, rotational speeds are lowered, which resolves mechanical problems. These lower speeds protect the bearings and therefore prolong their service life. Running costs are reduced thanks to the smooth and uniform sanding belt run.

Suitable for

- Nova - S
- Nova - RS

Package contents

- Guide roller (diameter 145 mm) with preassembled bearing arrangement
- Bearing housing
- Guide tongue



Feed roll drive upgrade

Conversion work involves removing the the countershaft drive and replacing it with a continuous layshaft with a flexible clutch. In addition, the worm gears are mounted at the top with the worm shaft.

Benefits

Elimination of the countershaft saves both repair time and replacement parts. Installing the worm gear with the shaft at the top avoids the potential for oil leaks to occur at the shaft seal.

Suitable for

- Nova
- Nova-S
- Nova-RS
- Nova-RSA

Package contents

- Layshaft
- Flexible clutches
- Seal kit
- Pillow block
- Sprockets
- Toothed belt (incl. small parts)

